

**PERFORMANCE COLORS**  
by Nora Kühner  
part 1 | early color information  
WITH FASTNESS GUIDE

# LOST & FOUND

Winter 2026\*27

**PERFORMANCEDAYS**  
FUNCTIONAL FABRIC FAIR

**PERFORMANCE COLORS**  
by Nora Kühner were  
launched in April 2016  
as a cooperation project  
between PERFORMANCE  
DAYS and the renowned,  
Munich-based designer  
Nora Kühner.

Just like the trade fair,  
the color & trend fore-  
cast is presented twice a  
year. Starting with the  
season autumn/winter  
2019\*20 the color card is  
available as an exclusive  
free-of-charge service for  
the PERFORMANCE DAYS  
community.



## ABOUT THE FORECAST

Extensive research forms the basis of this forecast. Together with an international team of renowned designers, all deeply rooted in sports, Nora Kühner explores and analyses ongoing and emerging trends and their socio-cultural context. The team believes in the evolution of colors and trends from season to season. The color selection reflects this holistic approach: Six to seven color stories are created framing the season's focus topic.

The digital color forecast package of **PERFORMANCE COLORS** by Nora Kühner comes in two parts:

**PART 1**, the early color information is available about four weeks after the seasonal kickoff at PERFORMANCE DAYS. This part provides an overview of the color stories and the references of four leading color systems for all selected color hues: Archroma, Coloro, DyStar CSI and Pantone. Thanks to DyStar CSI the forecast features the light and washing fastnesses of the single colors as additional information, too. For textile color swatches and color recipes just contact DyStar.

**PART 2**, the e-magazine is delivered about eight weeks after the early color information (provided as PDF file, too). It complements the early color information file by a detailed overview of the background story, hints to fabric textures & surfaces and inspiration for color combinations and graphics.

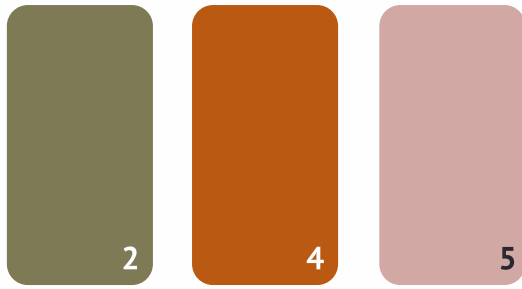




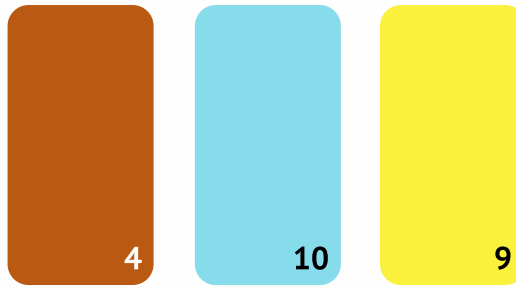
# SEASONAL CORE COLORS

**For this season we shaped eight color stories celebrating diversity, emotion and creativity. The profile of each story is characterized by the three lead colors.**

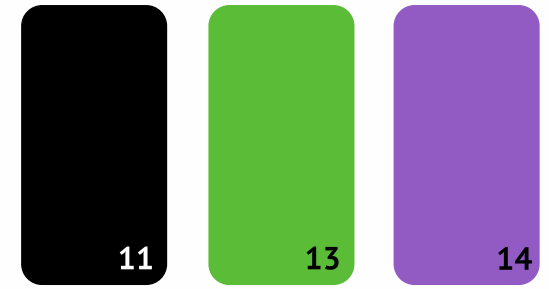
**The individual spirit of each color pairing is complemented and underlined by accent colors that open up perspectives for a wide variety of color combinations.**



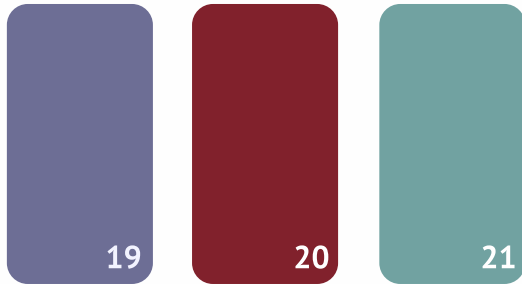
**BITTERSWEET  
REAWAKENINGS**



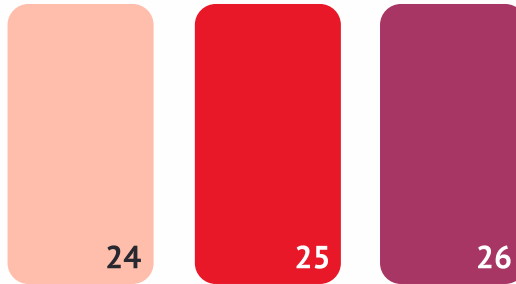
**WE HAVE IT ALL**



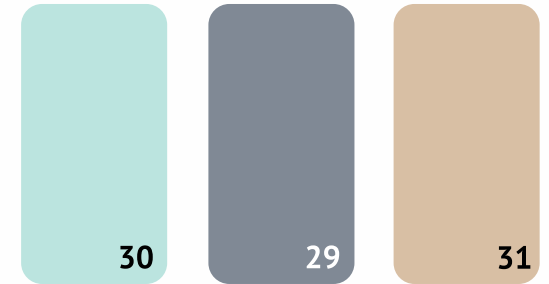
**RUNNING WILD**



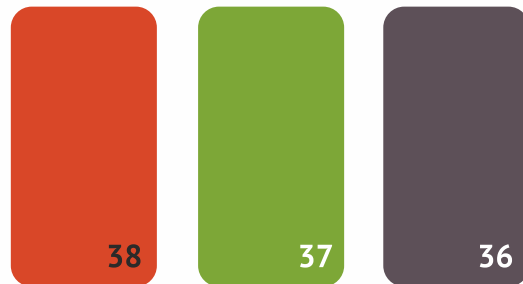
**UNDERCURRENTS**



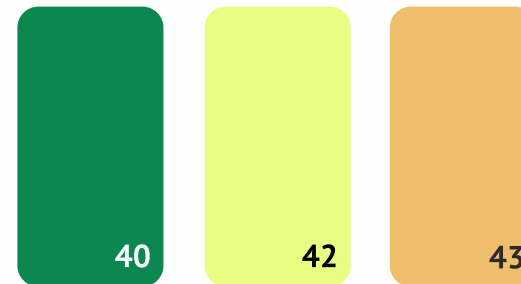
**PURE. SIMPLE. JOYFUL.**



**FLEETING MOMENTS**



**STANDING OUT,  
BLENDING IN**



**FALLING INTO PLACE**



photo: Kai Malter, shutterstock.com

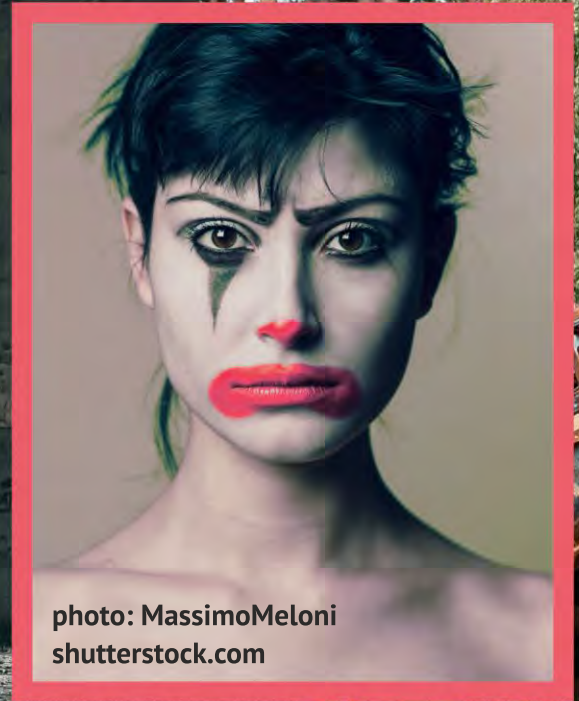
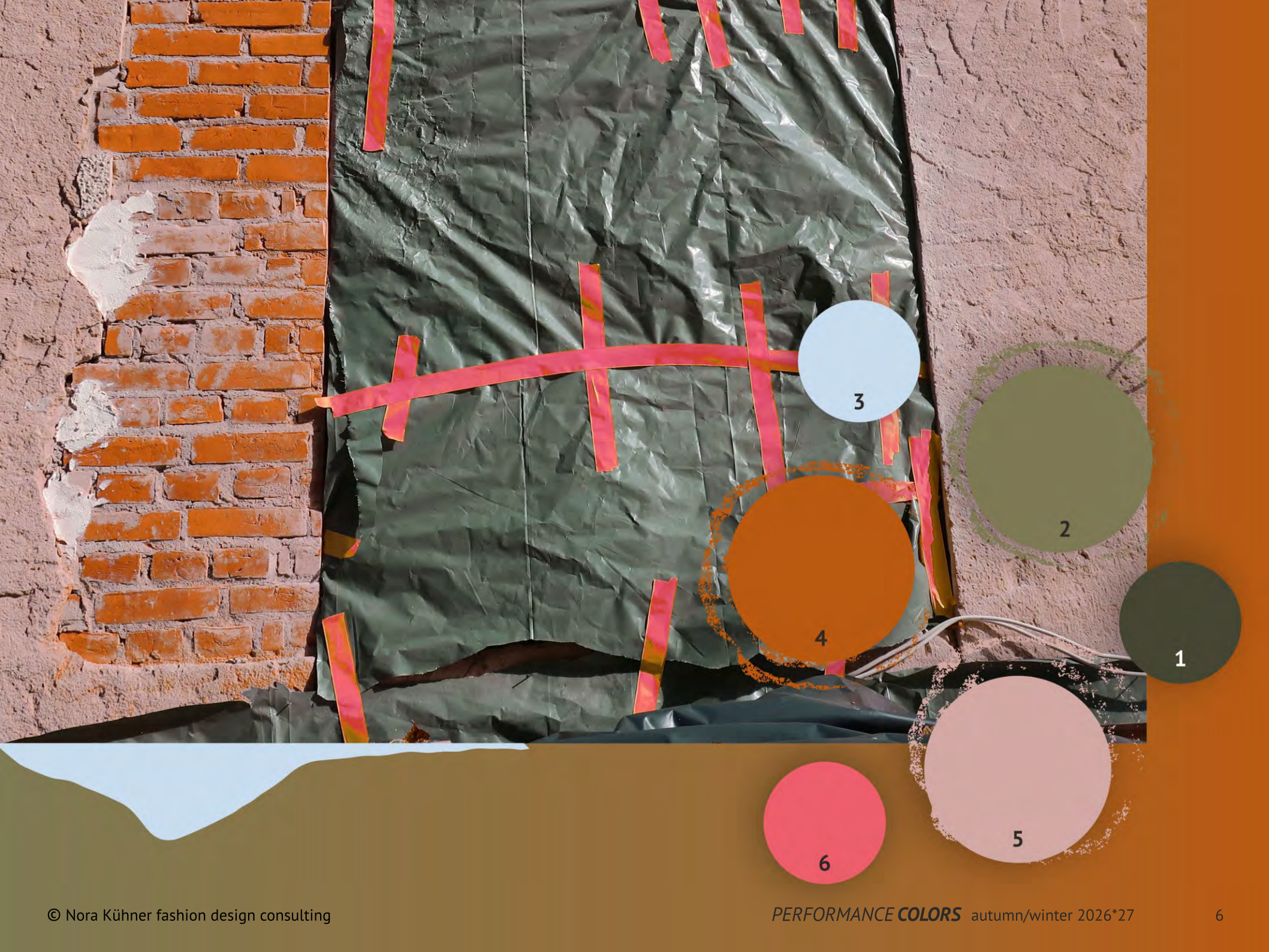


photo: MassimoMeloni  
shutterstock.com

# BITTERSWEET REAWAKENINGS

photo: Refluence  
shutterstock.com







rendering: Chesky, shutterstock.com

# We Have It All

photo: Kichigin, shutterstock.com

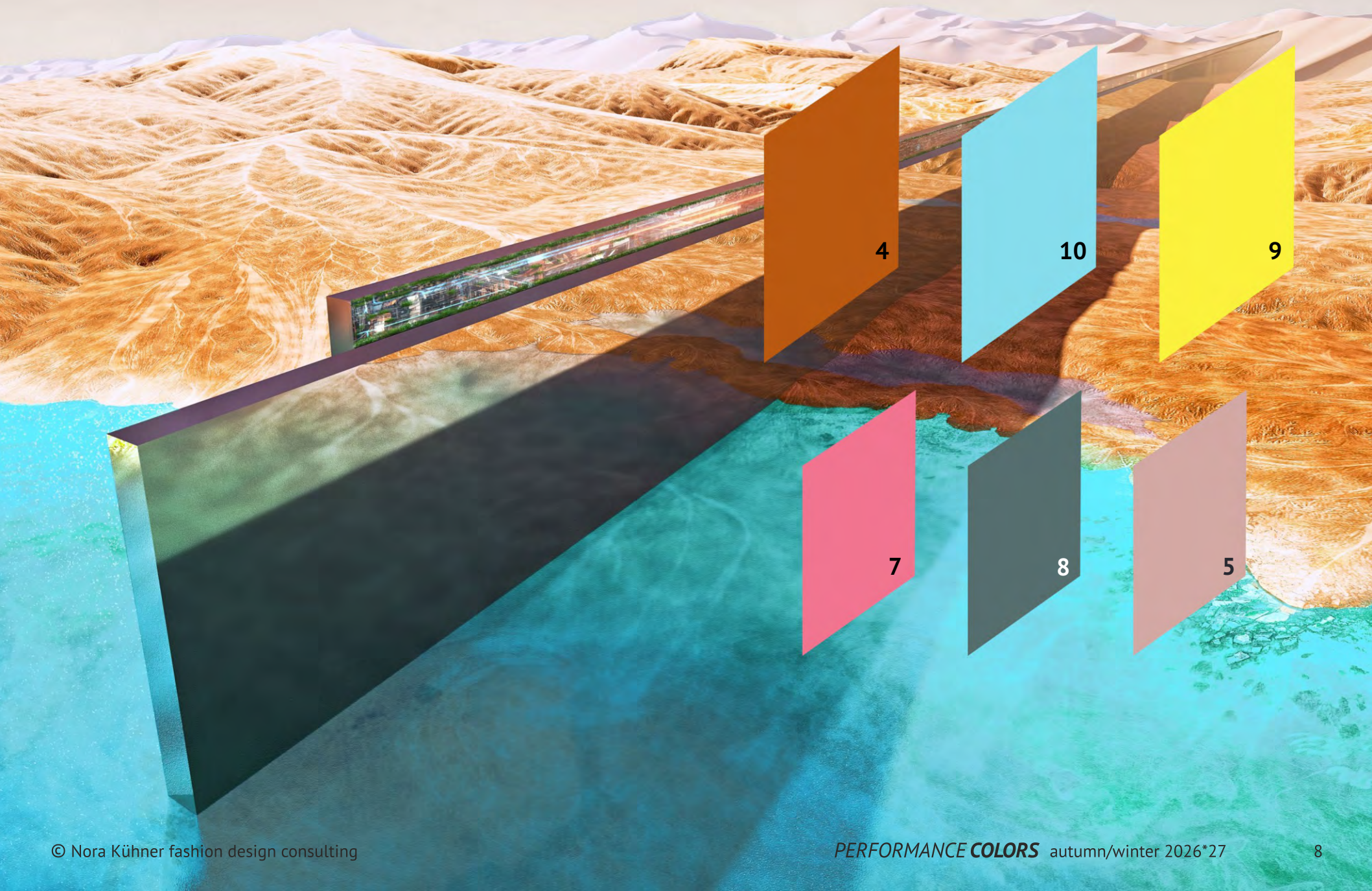
© Nora Kühner fashion design consulting



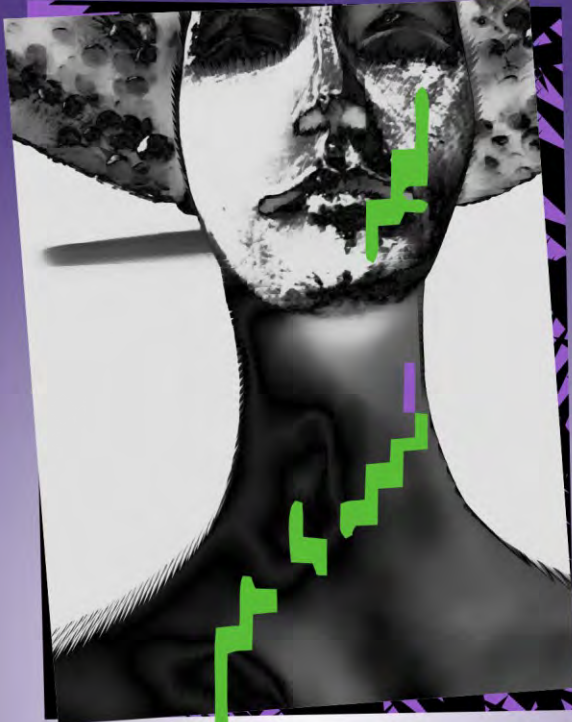
photo: oneinchpunch, shutterstock.com

PERFORMANCE **COLORS** autumn/winter 2026\*27









# RUNNING WILD





11



13



14



12



15



16



17



18



# UNDERCURRENTS

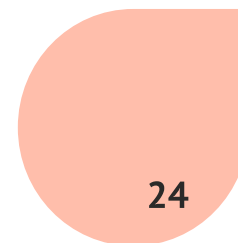




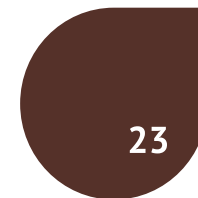
PURE. SIMPLE.  
JOYFUL.



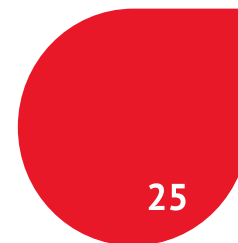




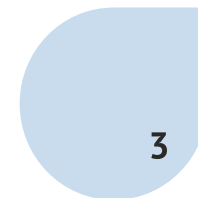
24



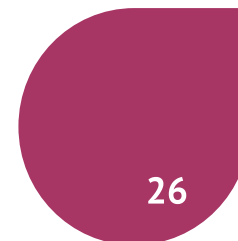
23



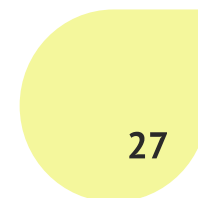
25



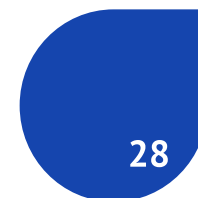
3



26



27



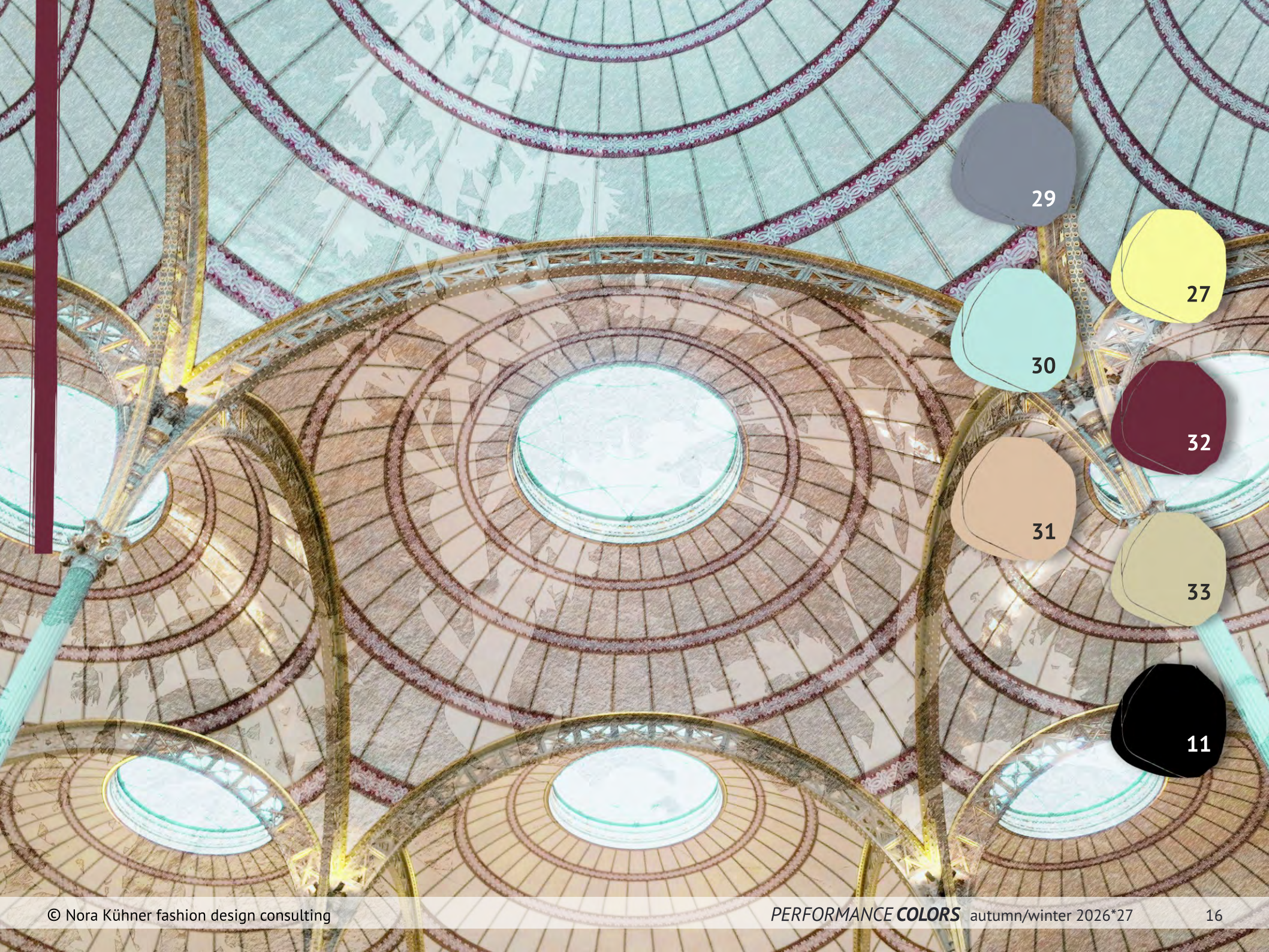
28





# FLEETING MOMENTS





29



27



30



32



31



33



11



# Standing Out, Blending In



background photo:  
safakcakil, shutterstock.com









# Falling Into Place





40



42



43



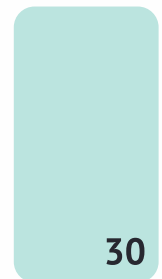
16



1



41



30





Winter 2026\*27

The color overview on the following pages references the codes from Archroma, Coloro, DyStar CSI and Pantone for all selected hues (45). Complemented by the estimations of the wash and light fastnesses of each single hue. Kindly provided by DyStar CSI, these estimations indicate where fastness issues may occur.

Please note that these estimations are generalizations. Depending on the fabrics which are finally used in your collection, fastnesses may vary from the overview. For detailed further information or the recipes of our selected colors please feel free to contact DyStar CSI.



DyStar Colours Distribution GmbH  
Am Prime Parc 10 - 12,  
95479 Raunheim, Germany  
+49 6142 4072 2090  
pulz.danica@dystar.com

## Selected Trend Colors Part 1

Please note:

Due to different materials, the visualization of the on-screen colors and the colors printed on paper may differ from the textile swatches.

Variation can be expected around these results depending on substrate, process and finishing.

- ☀ Light Fastness according ISO105 B02
- 💧 Wash Fastness according ISO105 C06 A2S
- estimated fastness result above grade 3-4 \*
- estimated fastness result below grade 3-4 \*

\* The colors are generalizations of the achievable fastness results.

01/ DyStar CSI col. 0905643	Polyester	Cotton, bleached	Polyamide 6
☀ = Light Fastness estimation	☀	☀	☀
💧 = Wash Fastness estimation	💧	💧	💧

Archroma (Cotton) col. 549-840  
Archroma (Polyester) col. 816-850  
Coloro 053-35-07  
Pantone col. 18-0322 TCX

02/ DyStar CSI cl. to 0903828	Polyester	Cotton, bleached	Polyamide 6
☀ = Light Fastness estimation	☀	☀	☀
💧 = Wash Fastness estimation	💧	💧	💧

Archroma (Cotton) col. 817-560  
Archroma (Polyester) col. 817-560  
Coloro col. close to 050-55-13  
Pantone col. close to 17-0535 TCX

03/ DyStar CSI col. 0500947	Polyester	Cotton, bleached	Polyamide 6
☀ = Light Fastness estimation	☀	☀	☀
💧 = Wash Fastness estimation	💧	💧	💧

Archroma (Cotton) col. 329-160  
Archroma (Polyester) col. NO MATCH  
Coloro col. 112-84-11  
Pantone col. 14-4005 TCX

04/ DyStar CSI col. 0202198	Polyester	Cotton, bleached	Polyamide 6
☀ = Light Fastness estimation	☀	☀	☀
💧 = Wash Fastness estimation	💧	💧	💧

Archroma (Cotton) col. 110-880  
Archroma (Polyester) col. close to 703-840  
Coloro col. 024-50-32  
Pantone col. 18-1249 TCX

05/ DyStar CSI col. 0201618	Polyester	Cotton, bleached	Polyamide 6
☀ = Light Fastness estimation	☀	☀	☀
💧 = Wash Fastness estimation	💧	💧	💧

Archroma (Cotton) col. 542-271  
Archroma (Polyester) col. close to 820-180  
Coloro col. 009-77-16





Winter 2026\*27

## Selected Trend Colors Part 2

Please note:

Due to different materials, the visualization of the on-screen colors and the colors printed on paper may differ from the textile swatches.

Variation can be expected around these results depending on substrate, process and finishing.

- ☀ = Light Fastness according ISO105 B02
- 💧 = Wash Fastness according ISO105 C06 A2S
- = estimated fastness result above grade 3-4 \*
- = estimated fastness result below grade 3-4 \*

\* The colors are generalizations of the achievable fastness results.



DyStar Colours Distribution GmbH  
Am Prime Parc 10 - 12,  
95479 Raunheim, Germany  
+49 6142 4072 2090  
pulz.danica@dystar.com

06/ DyStar CSI col. 0303365	Polyester	Cotton, bleached	Polyamide 6
☀ = Light Fastness estimation	☀	☀	☀
💧 = Wash Fastness estimation	●	●	●

Archroma (Cotton) col. 103-480  
Archroma (Polyester) col. close to 701-530  
Coloro col. close to 005-57-28  
Pantone col. 17-1647 TCX

07/ DyStar CSI col. 0301009	Polyester	Cotton, bleached	Polyamide 6
☀ = Light Fastness estimation	☀	☀	☀
💧 = Wash Fastness estimation	●	●	●

Archroma (Cotton) col. 102-380  
Archroma (Polyester) col. close to 701-440  
Coloro col. 160-61-28  
Pantone col. 16-1735 TCX

08/ DyStar CSI cl. to 1100294	Polyester	Cotton, bleached	Polyamide 6
☀ = Light Fastness estimation	☀	☀	☀
💧 = Wash Fastness estimation	●	●	●

Archroma (Cotton) col. 815-640  
Archroma (Polyester) col. 815-640  
Coloro col. 085-52-07  
Pantone col. 18-4011 TCX

09/ DyStar CSI col. 0101107	Polyester	Cotton, bleached	Polyamide 6
☀ = Light Fastness estimation	☀	☀	☀
💧 = Wash Fastness estimation	●	●	●

Archroma (Cotton) col. 216-370  
Archroma (Polyester) NO MATCH  
Coloro col. 043-85-34  
Pantone col. 13-0647 TCX

10/ DyStar CSI col. 0600167	Polyester	Cotton, bleached	Polyamide 6
☀ = Light Fastness estimation	☀	☀	☀
💧 = Wash Fastness estimation	●	●	●

Archroma (Cotton) col. 327-250  
Archroma (Polyester) col. NO MATCH  
Coloro col. 098-79-18  
Pantone col. 13-4307 TCX

11/ DyStar CSI col. 1000019	Polyester	Cotton, bleached	Polyamide 6
☀ = Light Fastness estimation	☀	☀	☀
💧 = Wash Fastness estimation	●	●	●

Archroma (Cotton) col. 658-910  
Archroma (Polyester) col. 811-920  
Coloro col. 121-22-04  
Pantone col. 19-1100 TCX

12/ DyStar CSI col. 0401919	Polyester	Cotton, bleached	Polyamide 6
☀ = Light Fastness estimation	☀	☀	☀
💧 = Wash Fastness estimation	●	●	●

Archroma (Cotton) col. 658-180  
Archroma (Polyester) col. NO MATCH  
Coloro col. 037-93-00  
Pantone col. 11-0700 TCX

13/ DyStar CSI col. NO MATCH	Polyester	Cotton, bleached	Polyamide 6
☀ = Light Fastness estimation	☀	☀	☀
💧 = Wash Fastness estimation	●	●	●

Archroma (Cotton) col. 220-680  
Archroma (Polyester) col. 705-870  
Coloro col. close to 060-62-26  
Pantone col. 16-0235 TCX

14/ DyStar CSI cl. to 0400253	Polyester	Cotton, bleached	Polyamide 6
☀ = Light Fastness estimation	☀	☀	☀
💧 = Wash Fastness estimation	●	●	●

Archroma (Cotton) col. close to 435-380  
Archroma (Polyester) col. 709-380  
Coloro col. 136-47-33  
Pantone col. close to 18-3628 TCX

15/ DyStar CSI cl. to 0101362	Polyester	Cotton, bleached	Polyamide 6
☀ = Light Fastness estimation	☀	☀	☀
💧 = Wash Fastness estimation	●	●	●

Archroma (Cotton) col. 214-670  
Archroma (Polyester) col. NO MATCH  
Coloro col. close to 035-71-28  
Pantone col. 14-0952 TCX



# PERFORMANCE COLORS by Nora Kühner



Winter 2026\*27

## Selected Trend Colors Part 3

Please note:

Due to different materials, the visualization of the on-screen colors and the colors printed on paper may differ from the textile swatches.

Variation can be expected around these results depending on substrate, process and finishing.

- ☀ Light Fastness according ISO105 B02
- 💧 Wash Fastness according ISO105 C06 A2S
- estimated fastness result above grade 3-4 \*
- estimated fastness result below grade 3-4 \*

\* The colors are generalizations of the achievable fastness results.



DyStar Colours Distribution GmbH  
Am Prime Parc 10 - 12,  
95479 Raunheim, Germany  
+49 6142 4072 2090  
pulz.danica@dystar.com

16/ DyStar CSI col. 0200218	Polyester	Cotton, bleached	Polyamide 6
☀ = Light Fastness estimation	☀	☀	☀
💧 = Wash Fastness estimation	●	●	●

Archroma (Cotton) col. 110-480  
Archroma (Polyester) col. 703-560  
Coloro col. 026-65-40  
Pantone col. 17-1350 TCX

17/ DyStar CSI c.l. to 0900623	Polyester	Cotton, bleached	Polyamide 6
☀ = Light Fastness estimation	☀	☀	☀
💧 = Wash Fastness estimation	●	●	●

Archroma (Cotton) col. 321-310  
Archroma (Polyester) col. NO MATCH  
Coloro col. 065-65-14  
Pantone col. 14-6319 TCX

18/ DyStar CSI col. 0400930	Polyester	Cotton, bleached	Polyamide 6
☀ = Light Fastness estimation	☀	☀	☀
💧 = Wash Fastness estimation	●	●	●

Archroma (Cotton) col. 434-660  
Archroma (Polyester) col. NO MATCH  
Coloro col. NO MATCH  
Pantone col. 19-3748 TCX

19/ DyStar CSI c.l. to 0402089	Polyester	Cotton, bleached	Polyamide 6
☀ = Light Fastness estimation	☀	☀	☀
💧 = Wash Fastness estimation	●	●	●

Archroma (Cotton) col. 433-340  
Archroma (Polyester) col. close to 709-420  
Coloro col. 129-45-17  
Pantone col. 18-3820 TCX

20/ DyStar CSI col. 0300541	Polyester	Cotton, bleached	Polyamide 6
☀ = Light Fastness estimation	☀	☀	☀
💧 = Wash Fastness estimation	●	●	●

Archroma (Cotton) col. 104-960  
Archroma (Polyester) col. 701-980  
Coloro col. 009-30-29  
Pantone col. 19-1537 TCX

21/ DyStar CSI col. 0601106	Polyester	Cotton, bleached	Polyamide 6
☀ = Light Fastness estimation	☀	☀	☀
💧 = Wash Fastness estimation	●	●	●

Archroma (Cotton) col. 325-310  
Archroma (Polyester) col. NO MATCH  
Coloro col. 088-65-10  
Pantone col. 16-5112 TCX

22/ DyStar CSI col. 0700454	Polyester	Cotton, bleached	Polyamide 6
☀ = Light Fastness estimation	☀	☀	☀
💧 = Wash Fastness estimation	●	●	●

Archroma (Cotton) col. 547-260  
Archroma (Polyester) col. 817-260  
Coloro col. 039-75-11  
Pantone col. 13-0919 TCX

23/ DyStar CSI col. 0700061	Polyester	Cotton, bleached	Polyamide 6
☀ = Light Fastness estimation	☀	☀	☀
💧 = Wash Fastness estimation	●	●	●

Archroma (Cotton) col. 543-760  
Archroma (Polyester) col. close to 820-770  
Coloro col. 019-27-14  
Pantone col. 19-1431 TCX

24/ DyStar CSI col. 0200243	Polyester	Cotton, bleached	Polyamide 6
☀ = Light Fastness estimation	☀	☀	☀
💧 = Wash Fastness estimation	●	●	●

Archroma (Cotton) col. 104-180  
Archroma (Polyester) col. NO MATCH  
Coloro col. 012-76-21  
Pantone col. 14-1420 TCX

25/ DyStar CSI c.l. to 0201555	Polyester	Cotton, bleached	Polyamide 6
☀ = Light Fastness estimation	☀	☀	☀
💧 = Wash Fastness estimation	●	●	●

Archroma (Cotton) col. 106-680  
Archroma (Polyester) col. NO MATCH  
Coloro col. 014-48-36  
Pantone col. 18-1664 TCX



# PERFORMANCE COLORS by Nora Kühner



Winter 2026\*27

## Selected Trend Colors Part 4

Please note:

Due to different materials, the visualization of the on-screen colors and the colors printed on paper may differ from the textile swatches.

Variation can be expected around these results depending on substrate, process and finishing.

- ☀ = Light Fastness according ISO105 B02
- 💧 = Wash Fastness according ISO105 C06 A2S
- = estimated fastness result above grade 3-4 \*
- = estimated fastness result below grade 3-4 \*

\* The colors are generalizations of the achievable fastness results.



DyStar Colours Distribution GmbH  
Am Prime Parc 10 - 12,  
95479 Raunheim, Germany  
+49 6142 4072 2090  
pulz.danica@dystar.com

26/ DyStar CSI col. 0401906	Polyester	Cotton, bleached	Polyamide 6
☀ = Light Fastness estimation	☀	☀	☀
💧 = Wash Fastness estimation	●	●	●

Archroma (Cotton) col. 440-650  
Archroma (Polyester) col. close to 710-740  
Coloro col. 150-40-30  
Pantone col. 18-2326 TCX

27/ DyStar CSI col. 0100936	Polyester	Cotton, bleached	Polyamide 6
☀ = Light Fastness estimation	☀	☀	☀
💧 = Wash Fastness estimation	●	●	●

Archroma (Cotton) col. 217-240  
Archroma (Polyester) col. 705-230  
Coloro col. 046-87-28  
Pantone col. 12-0742 TCX

28/ DyStar CSI col. 0500979	Polyester	Cotton, bleached	Polyamide 6
☀ = Light Fastness estimation	☀	☀	☀
💧 = Wash Fastness estimation	●	●	●

Archroma (Cotton) col. 432-750  
Archroma (Polyester) col. NO MATCH  
Coloro col. close to 120-32-36  
Pantone col. close to 19-4058 TCX

29/ DyStar CSI col. 1100236	Polyester	Cotton, bleached	Polyamide 6
☀ = Light Fastness estimation	☀	☀	☀
💧 = Wash Fastness estimation	●	●	●

Archroma (Cotton) col. 654-230  
Archroma (Polyester) col. close to 814-440  
Coloro col. 122-56-03  
Pantone col. 15-4307 TCX

30/ DyStar CSI col. 0600337	Polyester	Cotton, bleached	Polyamide 6
☀ = Light Fastness estimation	☀	☀	☀
💧 = Wash Fastness estimation	●	●	●

Archroma (Cotton) col. 325-150  
Archroma (Polyester) col. NO MATCH  
Coloro col. 089-87-15  
Pantone col. 12-5410 TCX

31/ DyStar CSI col. 0800188	Polyester	Cotton, bleached	Polyamide 6
☀ = Light Fastness estimation	☀	☀	☀
💧 = Wash Fastness estimation	●	●	●

Archroma (Cotton) col. 545-170  
Archroma (Polyester) col. 818-170  
Coloro col. 029-82-14  
Pantone col. 13-1011 TCX

32/ DyStar CSI cl. to 0302862	Polyester	Cotton, bleached	Polyamide 6
☀ = Light Fastness estimation	☀	☀	☀
💧 = Wash Fastness estimation	●	●	●

Archroma (Cotton) col. 101-960  
Archroma (Polyester) col. 701-920  
Coloro col. 152-28-22  
Pantone col. 19-2024 TCX

33/ DyStar CSI col. 0902961	Polyester	Cotton, bleached	Polyamide 6
☀ = Light Fastness estimation	☀	☀	☀
💧 = Wash Fastness estimation	●	●	●

Archroma (Cotton) col. 548-260  
Archroma (Polyester) col. close to 817-160  
Coloro col. 046-79-11  
Pantone col. 14-0615 TCX

34/ DyStar CSI cl. to 0503294	Polyester	Cotton, bleached	Polyamide 6
☀ = Light Fastness estimation	☀	☀	☀
💧 = Wash Fastness estimation	●	●	●

Archroma (Cotton) col. 330-280  
Archroma (Polyester) col. NO MATCH  
Coloro col. 118-69-22  
Pantone col. close to 15-3930 TCX

35/ DyStar CSI col. 0101256	Polyester	Cotton, bleached	Polyamide 6
☀ = Light Fastness estimation	☀	☀	☀
💧 = Wash Fastness estimation	●	●	●

Archroma (Cotton) col. 212-650  
Archroma (Polyester) col. NO MATCH  
Coloro col. 030-57-23  
Pantone col. close to 16-1341 TCX





Winter 2026\*27

## Selected Trend Colors Part 5

Please note:

Due to different materials, the visualization of the on-screen colors and the colors printed on paper may differ from the textile swatches.

Variation can be expected around these results depending on substrate, process and finishing.

- ☀ Light Fastness according ISO105 B02
- 💧 Wash Fastness according ISO105 C06 A2S
- estimated fastness result above grade 3-4 \*
- estimated fastness result below grade 3-4 \*

\* The colors are generalizations of the achievable fastness results.



DyStar Colours Distribution GmbH  
Am Prime Parc 10 - 12,  
95479 Raunheim, Germany  
+49 6142 4072 2090  
pulz.danica@dystar.com

36/ DyStar CSI col. 1101165	Polyester	Cotton, bleached	Polyamide 6
☀ = Light Fastness estimation	☀	☀	☀
💧 = Wash Fastness estimation	●	●	●

Archroma (Cotton) col. 657-510  
Archroma (Polyester) col. 812-630  
Coloro col. 146-35-07  
Pantone col. close to 17-1708 TCX

37/ DyStar CSI col. 0903702	Polyester	Cotton, bleached	Polyamide 6
☀ = Light Fastness estimation	☀	☀	☀
💧 = Wash Fastness estimation	●	●	●

Archroma (Cotton) col. 219-670  
Archroma (Polyester) col. NO MATCH  
Coloro col. close to 059-66-28  
Pantone col. 16-0230 TCX

38/ DyStar CSI col. 0201563	Polyester	Cotton, bleached	Polyamide 6
☀ = Light Fastness estimation	☀	☀	☀
💧 = Wash Fastness estimation	●	●	●

Archroma (Cotton) col. 108-670  
Archroma (Polyester) col. 702-680  
Coloro col. 015-50-36  
Pantone col. 17-1562 TCX

39/ DyStar CSI col. 0900944	Polyester	Cotton, bleached	Polyamide 6
☀ = Light Fastness estimation	☀	☀	☀
💧 = Wash Fastness estimation	●	●	●

Archroma (Cotton) col. 651-880  
Archroma (Polyester) col. close to 815-960  
Coloro col. 074-28-15  
Pantone col. 19-5511 TCX

40/ DyStar CSI cl. to 0903525	Polyester	Cotton, bleached	Polyamide 6
☀ = Light Fastness estimation	☀	☀	☀
💧 = Wash Fastness estimation	●	●	●

Archroma (Cotton) col. 322-650  
Archroma (Polyester) col. 706-770  
Coloro col. close to 069-54-29  
Pantone col. 17-6154 TCX

41/ DyStar CSI col. 0302822	Polyester	Cotton, bleached	Polyamide 6
☀ = Light Fastness estimation	☀	☀	☀
💧 = Wash Fastness estimation	●	●	●

Archroma (Cotton) col. 439-150  
Archroma (Polyester) col. NO MATCH  
Coloro col. close to 150-81-16  
Pantone col. 14-2806 TCX

42/ DyStar CSI col. 0101547	Polyester	Cotton, bleached	Polyamide 6
☀ = Light Fastness estimation	☀	☀	☀
💧 = Wash Fastness estimation	●	●	●

Archroma (Cotton) col. 217-370  
Archroma (Polyester) col. NO MATCH  
Coloro col. 049-86-36  
Pantone col. 13-0645 TCX

43/ DyStar CSI col. 0100427	Polyester	Cotton, bleached	Polyamide 6
☀ = Light Fastness estimation	☀	☀	☀
💧 = Wash Fastness estimation	●	●	●

Archroma (Cotton) col. 214-440  
Archroma (Polyester) col. NO MATCH  
Coloro col. 035-78-29  
Pantone col. 14-0847 TCX



# LOST & FOUND

Winter 2026\*27

## CONCEPT, GRAPHICS & TEXT



**Nora Kühner** (Germany)

### **fashion . design . consulting**

Munich-based **Nora Kühner** is a freelance design consultant and trend forecaster. In a world marked by technological advances and a growing dematerialization her major focus in design is on the right balance between technology and people's needs. She is passionate about tracking carefully socio-cultural shifts and their influence on the sports sector, bringing her insights to the industry by speeches at major trade shows.

**info@norakuehner.com**

**www.norakuehner.com**

## CONTRIBUTING DESIGN STUDIOS



**Felicia Tarricone** (Italy)

**Felicia Tarricone** is a designer fascinated by the wonderful world of colors. For many years she worked as a Fashion Designer for children's clothing. Currently she works as a freelance Designer and Color Consultant. Curiosity, passion, perseverance form the basis of her studies in color design which are in continuous evolution.

**www.thecolorforme.com**



**Carla A. Bordini Bellandi** (Italy)

**Carla Bordini** is an experienced color expert and consultant. Her study & research stretch from the socio-cultural aspects of contemporary life to the visual ones, supported by the use of her photography. Color – related to fashion, textiles and interior in particular – has always been her main focus. She likes to convey her inspiring insights to different audiences through lectures. For 20 years she has been directing Italian and international leading companies in the textile field.

**carla.a.bordini@gmail.com**



**Altria Design** (Lithuania)

**Berta Ruskonienė** runs this design studio where designers and marketing specialists team up to develop innovative solutions for the sports sector. It is the first studio of this kind in the Baltic States focusing on creativity, functionality and the client's commercial success.

**bertaruskoni@gmail.com**



## CONTRIBUTING DESIGN STUDIOS



### C.I.A. (Italy)

#### Centro Ideazione Abbigliamento

For more than four decades **Mirella Becucci** has been active as a designer, consultant and technical expert in the fields of swimwear/bodywear/sportswear. Her unique expertise focuses on technical research, design, sampling and production processes – combined with special attention to performance requirements and socio-cultural trends. She is a frequent speaker in workshops on colours, materials and lifestyle.

[cia@mailboxit.com](mailto:cia@mailboxit.com)



### Federica Torricelli (Italy)

#### Fashion Sport Design

**Federica Torricelli** is an experienced freelance designer developing projects in the field of sports and function. For many years she was active in alpine skiing competitions. The extensive experiences gathered during this period of her life and her love for “active” fashion are the pillars of her design approach. She is committed to the development of hiking, alpine and cross country skiing gear. Besides, she loves to take up creative challenges in the fields of golf and yoga, her favourite hobbies.

[info@federicatorricelli.it](mailto:info@federicatorricelli.it)



### ConSiequenz (Germany)

**Cornelia Sievers** is an experienced freelance designer who has been working for national and international clients in the fashion & sports sector. Her studio's core competences comprise concept & design of collections, CAD pattern construction and production management. She is enthusiastic both about sports and design and understands how to combine design and pattern for performance wear.

[www.consiequenz.de](http://www.consiequenz.de)



### M. Pier C. Design s.r.l. (Italy)

A style studio, design center and communication agency established in Treviso in 1991 by **Pier Callegarini**, designer and artistic director. The specialized team's primary objective is to reach excellence in every project. Enriched by a constant research of materials, technologies and trends, and with particular attention to ethical principles. M. Pier C. design is: Mission, Passion, Innovation, Ethics, Respect, Creativity and design®.

[www.mpiercdesign.it](http://www.mpiercdesign.it)



### Gabi Altmann. (Germany)

#### Design, that works.

**Gabi Altmann** develops sports and functional fashion. And she designs from life experience: A licensed ski-instructor, experienced hiker, keen motor and mountain biker, beach volleyballer, fitness and jogging buff, she keeps exploring the world of motion. It has provided her with a deep understanding for what is demanded of 'active' fashion. A knowledge that she transforms into design – design, that works.

[www.gabi-althmann.de](http://www.gabi-althmann.de)





**Winter 2026\*27**

**PERFORMANCE COLORS by Nora Kühner**

All rights reserved.

Any use beyond the scope of copyright law requires a license.  
You may not copy, reproduce, republish, transmit, disseminate,  
distribute, display, post, modify, create derivative works from,  
sell, license or otherwise exploit in any way whatsoever any  
protected materials or other content from this brochure without

**Published by**

PERFORMANCE DAYS® functional fabric fair

**Project & distribution:**

Design & Development GmbH Textile Consult  
Mayerbacherstraße 32  
85737 Ismaning  
Germany  
+49 89 9394 6060  
info@performancedays.com  
www.performancedays.com

CEO: Christian Weichert & Marco Weichert  
Amtsgericht München HRB 122 051  
VAT-ID: DE 813 126 453

**Copyright in concept, layout, text & design:**

© (exclusive) Nora Kühner, November 2024

**Licenses available at:**

Nora Kühner - fashion design consulting  
Stuberstr. 10  
80638 München  
Germany  
+49 (0) 89 – 52 83 90  
info@norakuehner.com  
www.norakuehner.com

**Picture credits**

Nora Kühner, if not indicated differently